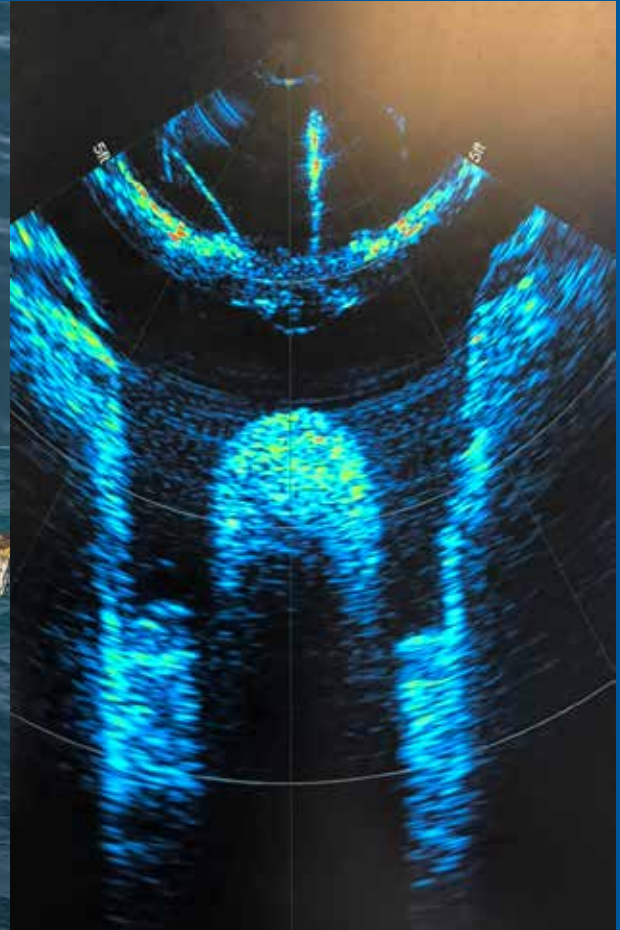
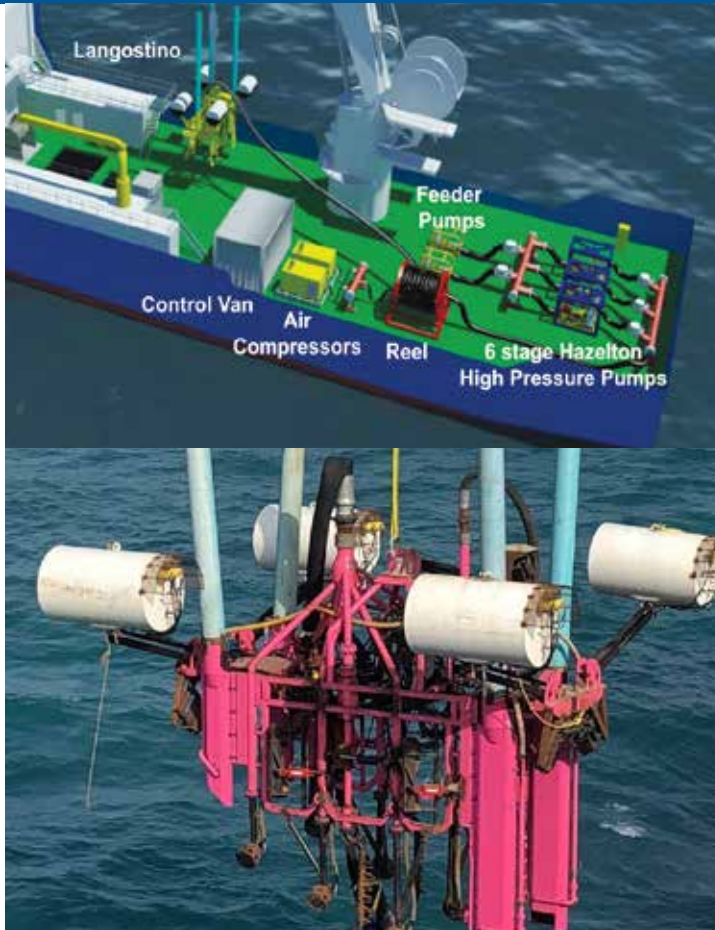


Langostino 2.0

Lay/Bury Submersible



Simultaneous lay/bury operations for subsea pipelines

The Langostino 2.0 is a self propelled pipeline trenching machine designed to bury up to 48" pipelines down to the 3' mudline. The Langostino 2.0 technology can be used to as a stand alone operation from lay barges, four-point vessels, liftboats and DP vessels.

The Langostino 2.0 is an improved design adding a hydraulic thruster, imaging sonar, automatic ballasting system and stability rollers. These additions have improved operability and reduced the need for diver interfaces. The hydraulic thruster and sonar assist with positioning the trencher over the pipe. The ballasting system ensures that the tool maintains an efficient burial orientation while the stability rollers assist with lack of field joint coating and other OD variables such as anodes.

Systems Onboard Include:

- Structural*
Frame designed for stability with three certified padeyes for lifting and setting.
- Hydraulic*
4 hour glass rollers centered under the machine track down the pipeline. Includes a positioning thruster
- Air*
4 airlifts mounted on the machine lift cuttings away from the ditch.
- Water*
Adjustable jetting nozzles along with 3,000gpm@ 900psi jet pumps give ample cutting capacity.

Specifications

Length	198'''
Width	7' 10"
Dry Weight	16,755 lbs.
Submerged Weight	7,716 lbs.
Operating Depth	20' to 300'

Buoyancy Control

Ballast	4 Tank
Compensation	Attitude & Current
Digitally controlled ballasting system	

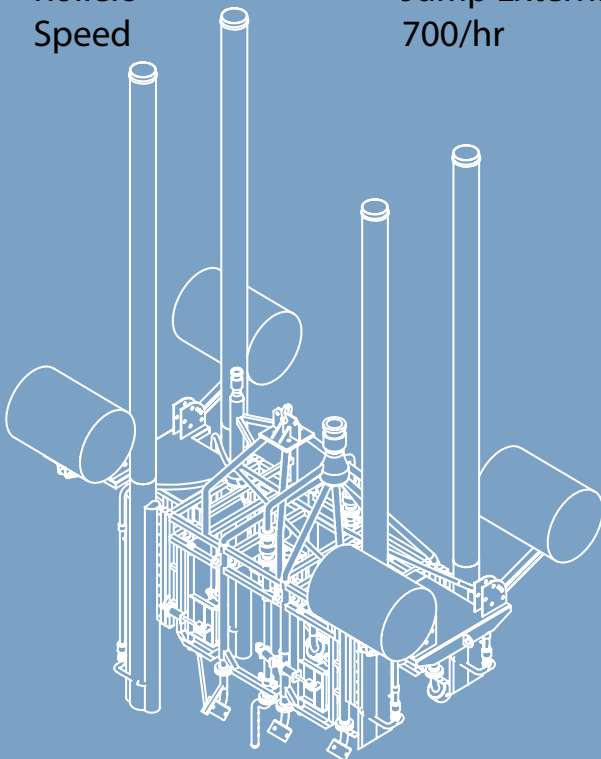
Trenching Equipment

Heads	6 Rotating Cutting
Nozzles (per head)	(4-8)
Ridge Busters	2 stems (optional)

Propulsion

Self-Propelled	
Fore	1 set Hydraulic
Aft	1 set Hydraulic
Independent Ram	Each Roller
Rollers	Jump External Fixtures
Speed	700/hr

FRONT VIEW



PERSPECTIVE VIEW

Pipelay

Minimum	24"
Maximum	58" O.D.

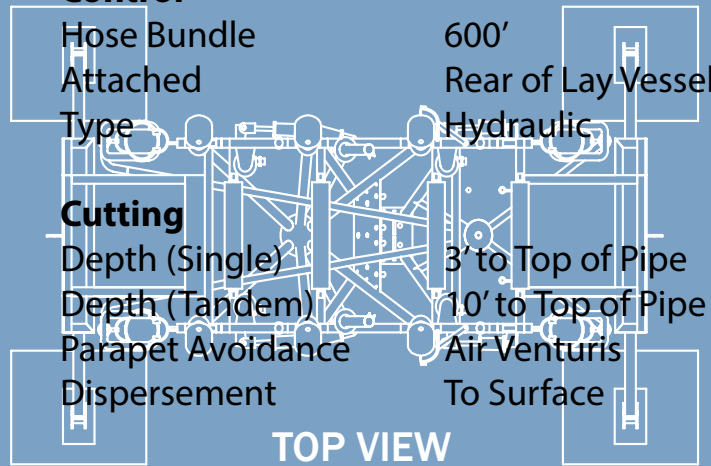
Control

Hose Bundle	600'
Attached	Rear of Lay Vessel
Type	Hydraulic

Cutting

Depth (Single)	3' to Top of Pipe
Depth (Tandem)	10' to Top of Pipe
Parapet Avoidance	Air Venturis
Dispersement	To Surface

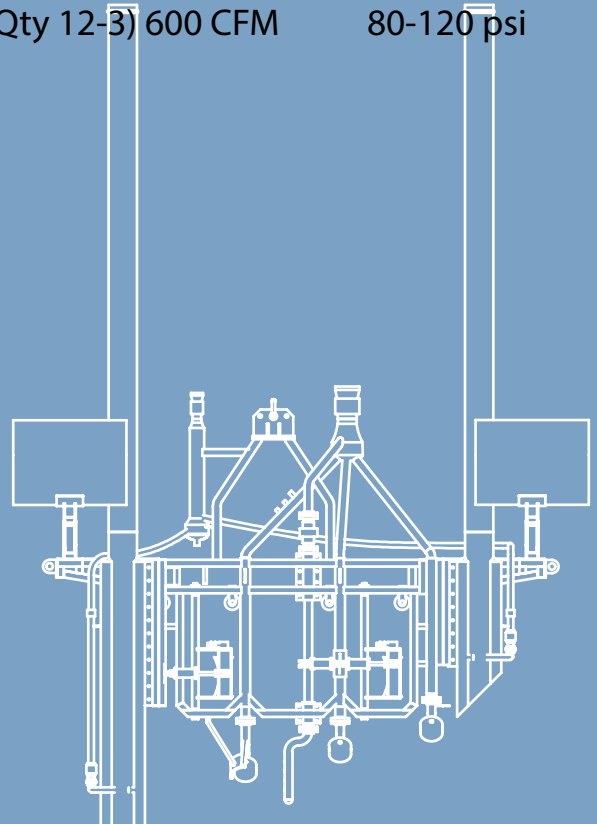
TOP VIEW



Air Compressors

(Qty 12-3)	600 CFM	80-120 psi
------------	---------	------------

SIDE VIEW



LL&G Construction, Inc.
 110 Industrial Blvd.
 Houma, LA 70363
 Helyn Ledet
 985-851-1141 (office)
 985-791-8209 (cell)